

APP Connecting Instruction

1. App download

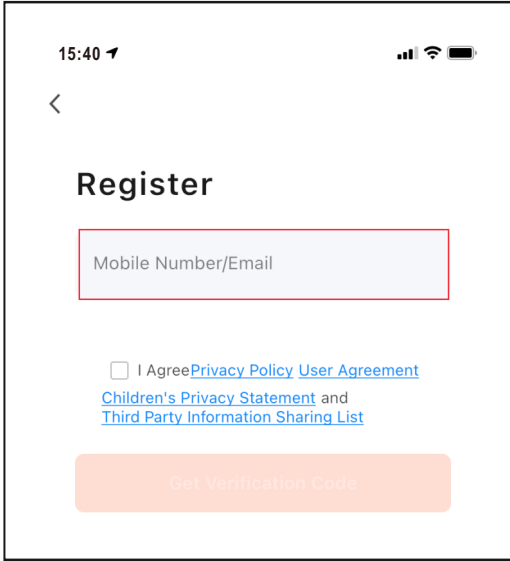
- Download "Tuya Smart" from the app store.
- Scan the QR code.
- Turn on the "GPS" from your mobile device.



NOTE Make sure your mobile phone is well connected to the nearest WIFI signal. Only one device can be paired through the APP at a time.

2. Login

- Register with your email ID or Mobile phone number as the user name.
- Setup your account password.

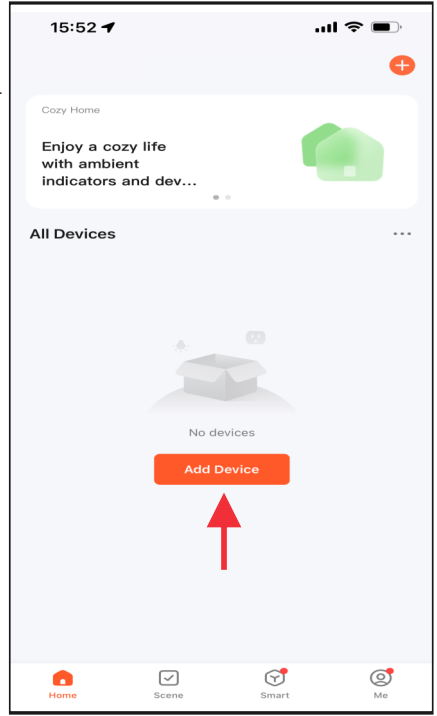


3. Add device

After account is created, log into account and select the "Add Device" button.

There are three methods to add your Electric Fireplace.

- Method 1: Add by Bluetooth. Open Bluetooth on your mobile phone before adding.
- Method 2: Add Manually on "P0" mode. Please follow below steps A,B,C,D.
- Method 3: Add Manually on "P1" mode. Please follow below steps A,B,C,D.

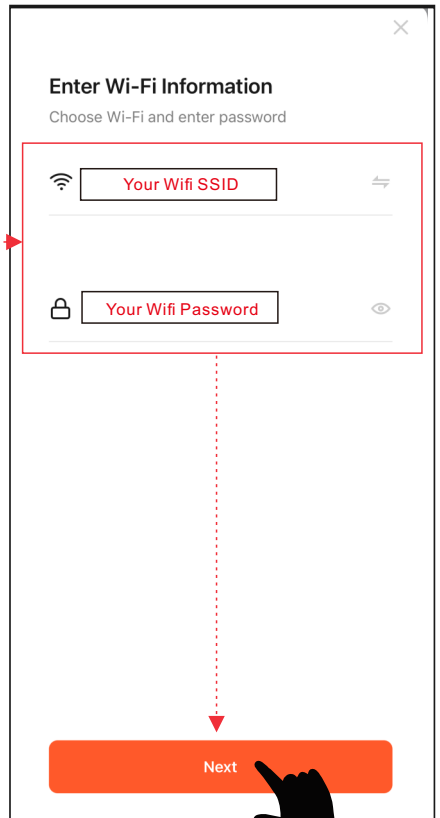
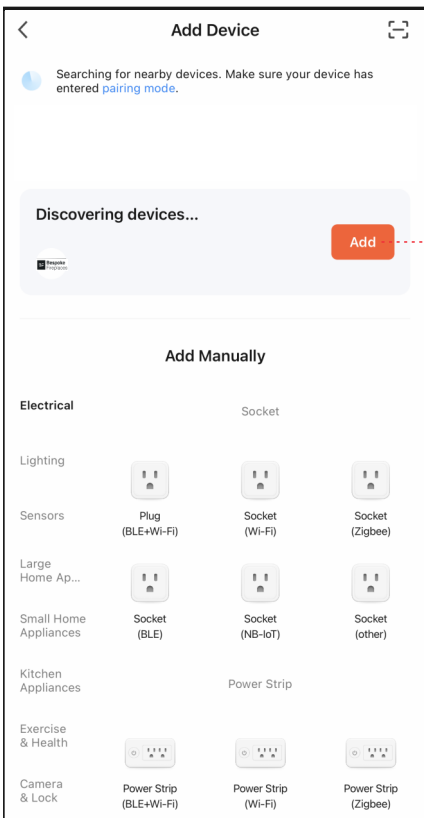


Add device - Method 1 (Bluetooth)


- Press the **Add** button when you see the device named "Bespoke Fireplace".
- Enter the WIFI name and password, then press "Next" button for pairing.
- When complete, display on control panel shows "P4", LED Ember-light shows GREEN color and flashes 6 times.

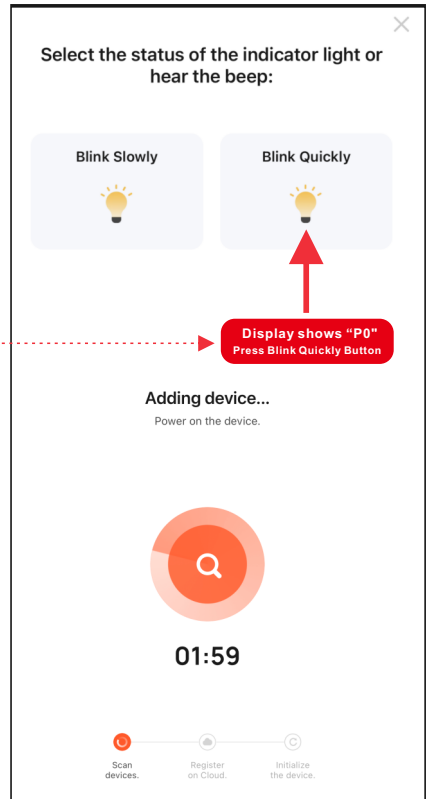
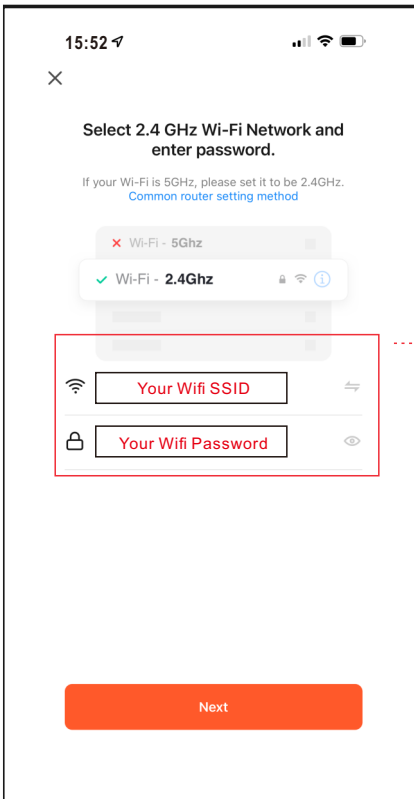
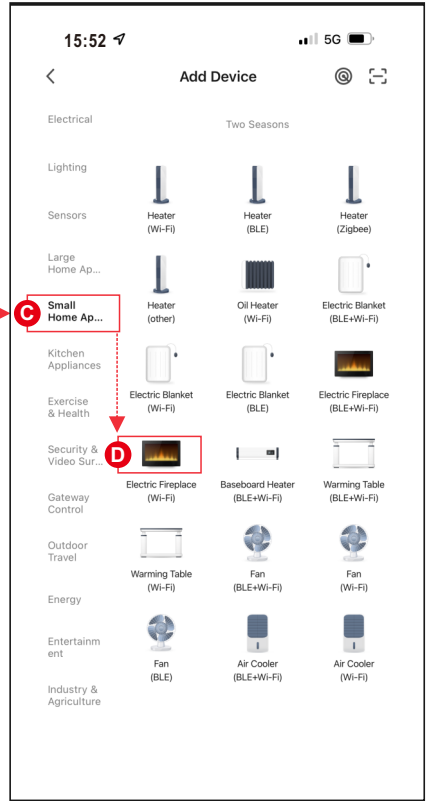
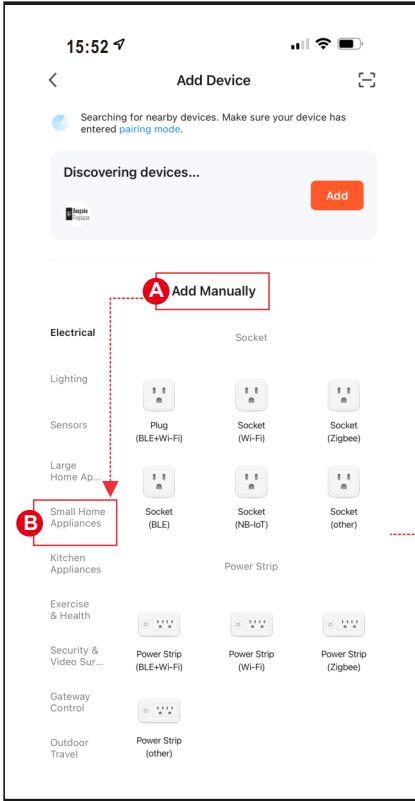
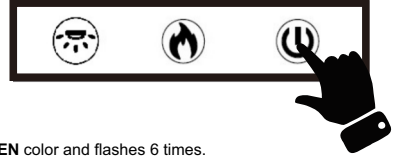
IMPORTANT INFORMATION

- Turn on the Blue-tooth device with your mobile phone.
- Connect your mobile phone with WIFI signal.




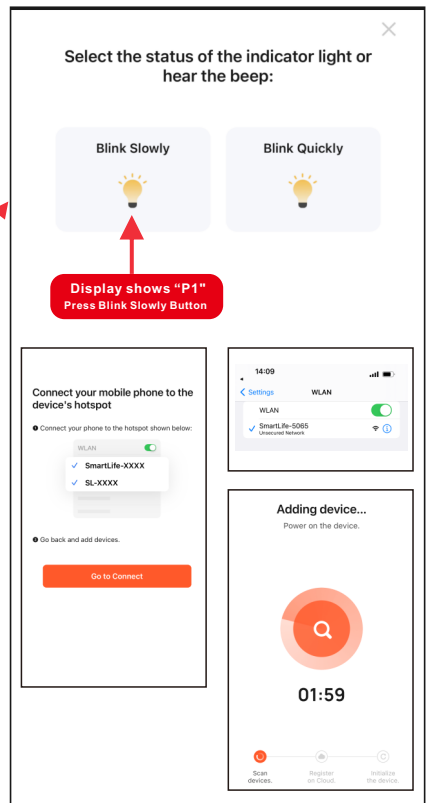
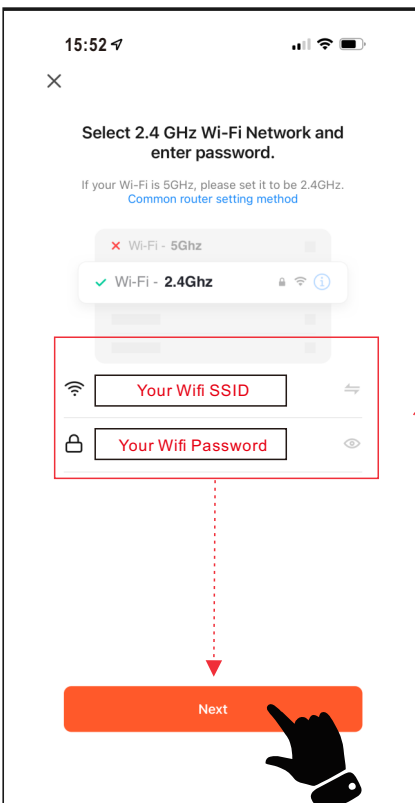
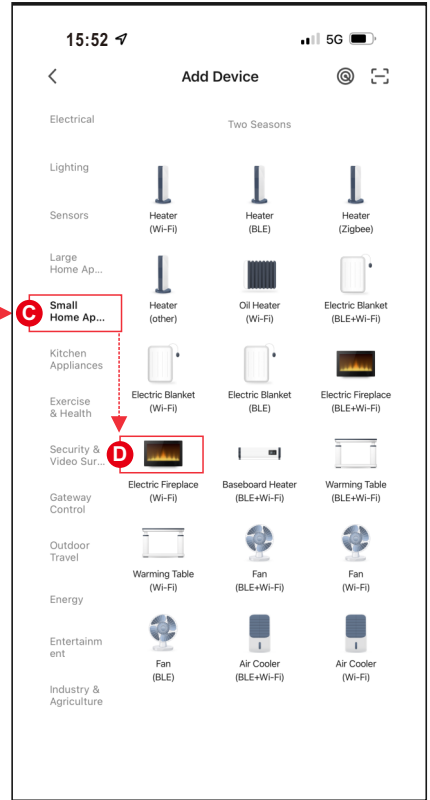
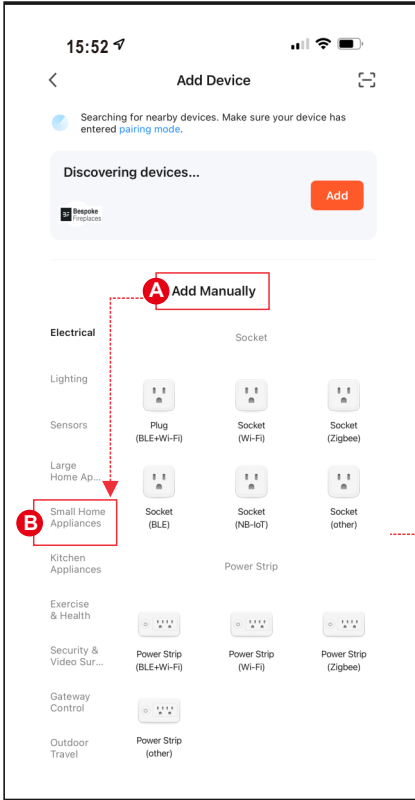
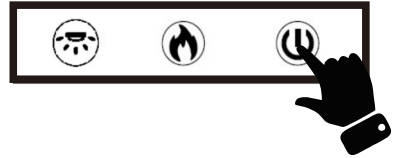
Add device - method 2 - (P0)

- Press & hold  from remote control or control panel until display on control panel shows "P0". Then follow below steps A,B,C,D.
- Enter the WIFI name and password, then press "Next" button for pairing.
- Press the **Blink Quickly** button for "P0", device being added.
- When complete, display on control panel shows "P4", LED Ember-light shows **GREEN** color and flashes 6 times.



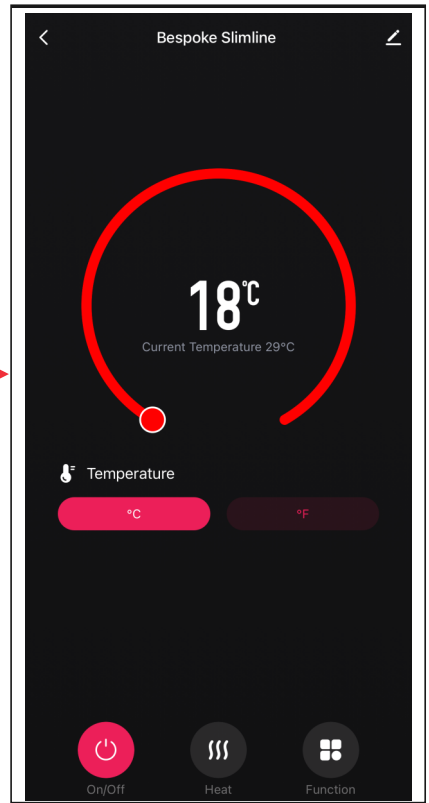
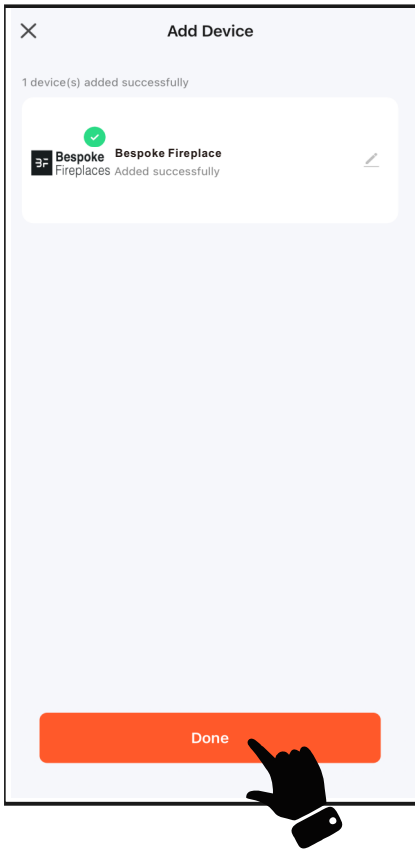
Add device - method 3 - (P1)

- Press & hold  from remote control or control panel until display on control panel shows "P1". Then follow below steps A,B,C,D.
- Enter the WIFI name and password, then press "Next" button for pairing.
- Press the **Blink Slowly** button for "P1", device being added.
- Select device's hotspot (**SmartLife-xxxx**), then back to device. Device being added.
- When complete, display on control panel shows "P4", LED Ember-light shows **GREEN** color and flashes 6 times.

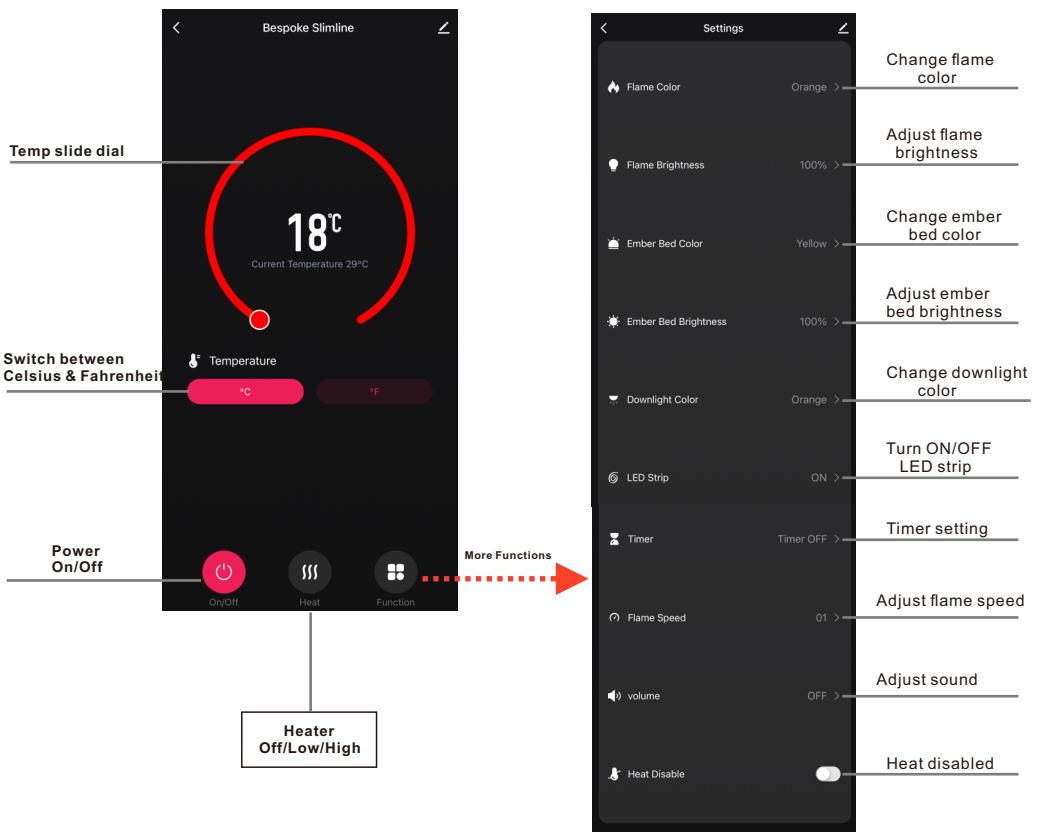


5. Complete

- Press **Done** to complete.



APP Operating Instruction



NOTE Only one device can be paired through the APP at a time.